



INTERNATIONAL ETHELLES CLASS



## ICE BUCKET

organised by

**COWES CORINTHIAN YACHT CLUB**

Saturday 14<sup>TH</sup> Sept - Sunday 15<sup>th</sup> 2019

# SAILING INSTRUCTIONS

## 1. RULES

- 1.1 The regatta will be governed by the rules as defined in The Racing Rules of Sailing (RRS), the rules of the International Etchells Class Association, the Notice of Race and these Sailing Instructions.
- 1.2 The Associated British Ports Southampton Byelaws current at the start of the first race of the event apply.
- 1.3 Rule 44.1 is changed so that the Two-Turns Penalty is replaced by the One-Turn Penalty except where the breach of the rule occurs within the Zone of any mark other than starting mark.
- 1.4 Boats shall comply with Associated British Ports Notice to Mariners No 14 of 2019: The Moving Prohibited Zone in the Precautionary Area which shall rank as an obstruction for the purposes of rules 19 and 20. Boats shall avoid close quarters with any commercial vessel.
- 1.5 Boat shall not anchor or kedge in Cowes Harbour fairway.
- 1.6 Sails may be borrowed in accordance with Etchells Class Rule C10.3
- 1.7 In the event of conflict between the Notice of Race and these Sailing Instructions, the provisions of these Sailing Instructions shall prevail, changing RRS 63.7.

## 2. NOTICES TO COMPETITORS

Notices to competitors will be posted on the official notice board located at Cowes Yacht Haven and on the online notice board on [yachtscoring.com](http://yachtscoring.com).

## 3. CHANGES TO SAILING INSTRUCTIONS

Any change to the sailing instructions will be posted before 0900 on the day it will take effect, except that any change to the schedule of races will be posted by 1800 on the day before it will take effect.

## 4. SIGNALS MADE ASHORE

Signals made ashore will be displayed at Cowes Yacht Haven.

When flag AP is displayed ashore, '1 minute' is replaced with 'not less than 60 minutes' in the race signal AP.

## 5. SCHEDULE OF RACES

- 5.1 Racing days will be Saturday 14<sup>th</sup> and Sunday 15<sup>th</sup> September 2019.
- 5.2 It is intended that there will be three races per day; however more than three races may be run on any one day if the Race Committee so decides. Any such decision shall not be the subject of a request for redress changing Rules 60.1 (b) and 62.
- 5.3 There will be a briefing at 09.30 at Cowes Yacht Haven on Saturday 14<sup>th</sup> September for all competitors

5.4 The scheduled time of the warning signal for the first race on Saturday 14<sup>th</sup> September is 11.55.  
On Sunday 15<sup>th</sup> September it is 10.55.

5.5 To alert boats that a race or sequence of races will begin soon, the orange starting line flag will be displayed with one sound five minutes before a warning signal is made.

5.6 On the last day of the regatta no warning signal will be made after 14:30, unless there is a postponement or general recall during a starting sequence.

5.7 Prizegiving will take place at CYH after racing on Sunday.

## 6. CLASS FLAGS

Class flag will be International Code Flag E.

## 7. RACING AREAS

Racing area will be in the Central Solent and further described in the briefing.

## THE COURSES

8.1 The courses will be selected from the CCCA standard courses.

8.2 No later than the warning signal, the race committee vessel will display a board showing the the approximate compass bearing of the first leg and course identifier.

## 9. MARKS

9.1 Marks will be orange inflatable buoys, or as described at the briefing.

9.2 New marks, as provided for at SI 11, will be black inflatable, cylindrical.

9.3 The race committee may lay an inner distance mark on or just in the pre-start area of the starting line. While racing, boats shall not pass between this mark and the committee vessel.

## 10. THE START

10.1 The starting line will be between a staff displaying an orange flag on the Committee Boat and the course side of the starting mark.

10.2 A boat starting later than five minutes after her starting signal will be scored Did Not Start without a hearing. This changes rule A4.

## 11. CHANGE OF THE NEXT LEG OF THE COURSE

11.1 To change the next leg of the course, the race committee will lay a new mark (or move the finishing line) and remove the original mark as soon as practicable. When in a subsequent change a new mark is replaced, it will be replaced by an original mark.

11.2 Course change signalling will only be made when the course change is more than 10 degrees or more than 200m distance. This changes RRS 33.

11.3 If a new windward mark is laid by the race committee, no spreader mark may be laid, in which case boats shall sail directly from the new windward mark to the Gate or Finish as appropriate.

## 12. THE FINISH

The finishing line will be between a staff displaying an orange flag on the Committee Boat and the course side of the finishing mark.

## 13. TIME LIMITS

13.1 The Time limit shall be 75 minutes.

13.2 Boats failing to finish within 15 minutes after the first boat sails the course and finishes will be scored Did Not Finish without a hearing. This changes rules 35, A4 and A5.

14. PROTESTS AND REQUESTS FOR REDRESS

14.1 Protest forms will be available at the Etchells container, located at Cowes Yacht Haven.

Protests and requests for redress or reopening shall be delivered there within the appropriate time limit. Contact mobile telephone numbers must be included on the protest form.

14.2 The protest time limit is 90 minutes after the last boat has finished the last race of the day or the race committee signals no more racing today, whichever is later.

14.3 Notices will be posted no later than 30 minutes after the protest time limit to inform competitors of the hearings in which they are parties or named as witnesses. Hearings will be at the Cowes Corinthian Yacht Club beginning at the time posted.

14.4 For infringements of rules other than in Parts 1 and 2 of the RRS, the penalty for a breach of a rule may, at the discretion of the protest committee, be less than disqualification.

15. SCORING

15.1 Two races are required to be completed to constitute a series.

15.1.1 When fewer than four races have been completed, a boat's series score will be the total of her race scores

15.1.2 When four or more race have been completed, a boat's score will be the total of her race scores excluding her worst score.

16. RETIREMENT

A boat that retires from a race shall notify the race committee as soon as possible.

17. REPLACEMENT OF CREW OR EQUIPMENT

17.1 Substitution of competitors will not be allowed without prior written approval of the race committee.

17.2 Substitution of damaged or lost equipment will not be allowed unless authorized by the race committee. Requests for substitution shall be made to the committee at the first reasonable opportunity.

18. EQUIPMENT AND MEASUREMENT CHECKS

A boat or equipment may be inspected at any time for compliance with the class rules and sailing instructions. On the water, a boat can be instructed by a race committee equipment inspector or measurer to proceed immediately to a designated area for inspection.

19. HAUL-OUT RESTRICTIONS

Keelboats shall not be hauled out during the regatta except with and according to the terms of prior written permission of the race committee.

20. RADIO COMMUNICATION

Except in an emergency, a boat shall neither make radio transmissions while racing nor receive radio communications not available to all boats. This restriction also applies to mobile telephones. The Race Committee will communicate with competitors on VHF channel 72 or such other radio channel as shall be announced at the briefing.

21. INSURANCE

Each participating boat shall be insured with valid third-party liability insurance with a minimum cover of £3,000,000 per event.

## Laid Mark Two Digit Identifiers

9A	Windward Mark	9H	Outer Distance Mark
9B	Windward Spreader or Offset Mark	9J	Finish Mark
9C	Leeward Mark or Gate (above start line)	9K	Far Windward Spreader or Offset Mark
9D	Leeward Spreader or Offset Mark	9L	Far Windward Spreader or Offset Mark
9E	Leeward Mark or Gate (below start line)	9M	Near Windward Mark
9F	Middle Gate	9N	Near Windward Spreader or Offset Mark
9G	Wing Mark	91	RYS Laid ODM Finishing Mark

## Laid Courses

The course to be sailed is shown below each course diagram.

Leave all marks to port unless indicated (S) to starboard in courses with gates.  
# is Start / Finish Line. + is Finish Line.

Marks shown in brackets ( ) will not be laid unless the designated symbol is displayed as follows:

When displayed  $\leftrightarrow$  means a Spreader or Offset Mark (1A) is laid.

When displayed  $\bullet\bullet$  means the Leeward Mark is a gate.

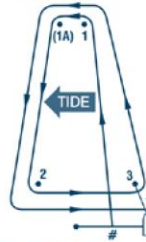
When displayed  $\oplus$  means finish the other side or ahead of the committee boat to the start line.

Course A



**A1** Start-1-(1A)-2(2S)-1  
**A2** Start-1-(1A)-2(2S)-1-(1A)-2(2S)-1 (shown above)

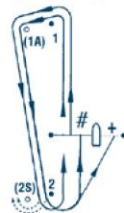
Course N



**N1** Start-1-(1A)-2-+  
**N2** Start-1-(1A)-2-3-1-(1A)-2-+ (shown above)  
**N3** Start-1-(1A)-2-3-1-(1A)-2-3-1-(1A)-2-+

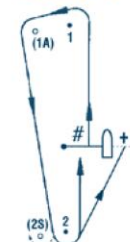
Diagrams are not sailing instructions

Course E



**E1** Start-1-(1A)-2(2S)-# or +  
**E2** Start-1-(1A)-2(2S)-1-(1A)-2(2S)-# or + (shown above)  
**E3** Start-1-(1A)-2(2S)-1-(1A)-2(2S)-1-(1A)-2(2S)-# or +

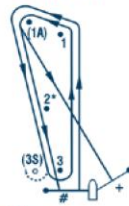
Course G



**G1** Start-1-(1A)-2(2S)-# or + (shown above)  
**G2** Start-1-(1A)-2(2S)-#-1-(1A)-2(2S)-# or +  
**G3** Start-1-(1A)-2(2S)-#-1-(1A)-2(2S)-#-1-(1A)-2(2S)-# or +

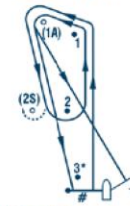
Diagrams are not sailing instructions

Course U



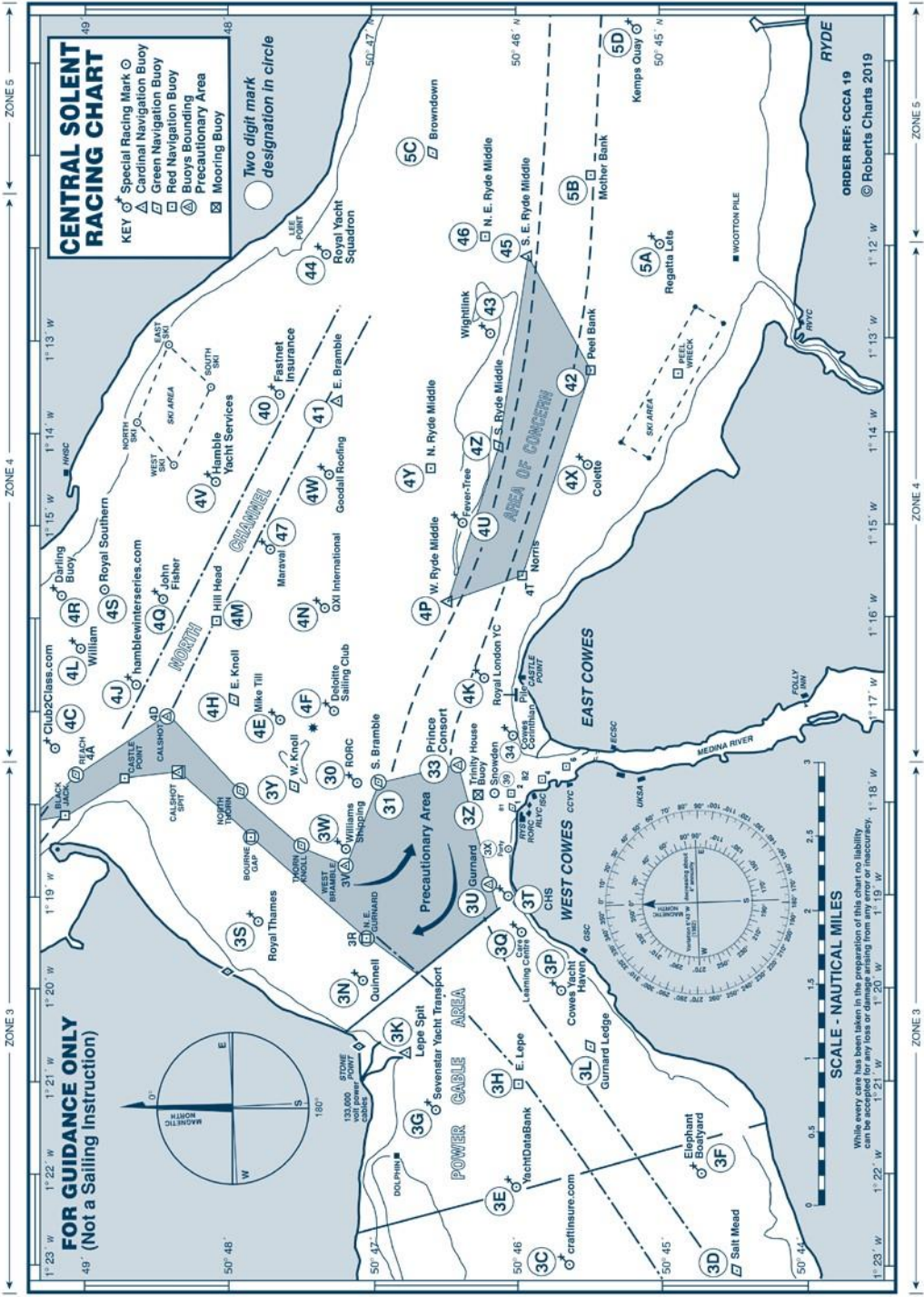
**U1** Start-1-1A-+ or #  
**U2** Start-1-(1A)-3(3S)-1-(1A)-+ or # (shown above)  
**U3** Start-1-(1A)-3(3S)-1-(1A)-3(3S)-1-(1A)-+ or #  
*\*Mark 2, if laid, is not a mark of this course*

Course V



**V1** Start-1-(1A)-+ or #  
**V2** Start-1-(1A)-2(2S)-1-(1A)-+ or # (shown above)  
**V3** Start-1-(1A)-2(2S)-1-(1A)-2(2S)-1-(1A)-+ or #  
*\*Mark 3, if laid, is not a mark of this course*

Diagrams are not sailing instructions



ZONE 3

ZONE 4

ZONE 5

ZONE 4

ZONE 3

ZONE 4

ZONE 5

1° 23' W

1° 22' W

1° 21' W

1° 20' W

1° 19' W

1° 18' W

1° 17' W

1° 15' W

1° 14' W

1° 13' W

1° 12' W

1° 11' W

1° 10' W

1° 09' W

50° 48' N

50° 47' N

50° 46' N

50° 45' N

50° 44' N

50° 43' N

50° 42' N

50° 41' N

50° 40' N

50° 39' N

50° 38' N

50° 37' N

50° 36' N

50° 35' N

50° 34' N

50° 33' N

50° 32' N

50° 31' N

50° 30' N

50° 29' N

50° 28' N

50° 27' N

50° 26' N

50° 25' N

50° 24' N

50° 23' N

50° 22' N

50° 21' N

50° 20' N

50° 19' N

50° 18' N

50° 17' N

50° 16' N

50° 15' N

50° 14' N

50° 13' N

50° 12' N

50° 11' N

50° 10' N

50° 09' N

50° 08' N

50° 07' N

50° 06' N

50° 05' N

50° 04' N

50° 03' N

50° 02' N

50° 01' N

50° 00' N

50° 00' N

50° 00' N

50° 00' N

50° 00' N

50° 00' N

50° 00' N

50° 00' N

50° 00' N

50° 00' N

50° 00' N

50° 00' N

50° 00' N

50° 00' N

50° 00' N

50° 00' N

50° 00' N

50° 00' N

50° 00' N

50° 00' N

50° 00' N

50° 00' N

50° 00' N

50° 00' N

50° 00' N

50° 00' N

50° 00' N

50° 00' N

50° 00' N

50° 00' N

50° 00' N

50° 00' N

50° 00' N

50° 00' N

50° 00' N

50° 00' N

50° 00' N

50° 00' N

50° 00' N

50° 00' N

50° 00' N

50° 00' N

50° 00' N

50° 00' N

50° 00' N

50° 00' N

50° 00' N

50° 00' N

50° 00' N

50° 00' N

50° 00' N

50° 00' N

50° 00' N

50° 00' N

50° 00' N

50° 00' N

50° 00' N

50° 00' N

50° 00' N

50° 00' N

50° 00' N

50° 00' N

50° 00' N

50° 00' N

50° 00' N

50° 00' N

50° 00' N

50° 00' N

50° 00' N

50° 00' N

50° 00' N

50° 00' N

50° 00' N

50° 00' N

50° 00' N

50° 00' N

50° 00' N

50° 00' N

50° 00' N

50° 00' N

50° 00' N

50° 00' N

50° 00' N

50° 00' N

50° 00' N

50° 00' N

50° 00' N

50° 00' N

50° 00' N

50° 00' N

50° 00' N

50° 00' N

50° 00' N

50° 00' N

50° 00' N

50° 00' N

50° 00' N

50° 00' N

50° 00' N

50° 00' N

50° 00' N

50° 00' N

50° 00' N

50° 00' N

50° 00' N

50° 00' N

50° 00' N

50° 00' N

50° 00' N

50° 00' N

50° 00' N

50° 00' N

50° 00' N

50° 00' N

50° 00' N

50° 00' N

50° 00' N

50° 00' N

50° 00' N

50° 00' N

50° 00' N

50° 00' N

50° 00' N

50° 00' N

50° 00' N

50° 00' N

50° 00' N

50° 00' N

50° 00' N

50° 00' N

50° 00' N

50° 00' N

50° 00' N

50° 00' N

50° 00' N

50° 00' N

50° 00' N

50° 00' N

50° 00' N

50° 00' N

50° 00' N

50° 00' N

50° 00' N

50° 00' N

50° 00' N

50° 00' N

50° 00' N

50° 00' N

50° 00' N

50° 00' N

50° 00' N

50° 00' N

50° 00' N

50° 00' N

50° 00' N

50° 00' N

50° 00' N

50° 00' N

50° 00' N

50° 00' N

50° 00' N

50° 00' N

50° 00' N

50° 00' N

50° 00' N

50° 00' N

50° 00' N

50° 00' N

50° 00' N

50° 00' N

50° 00' N

50° 00' N

50° 00' N

50° 00' N

50° 00' N

50° 00' N

50° 00' N

50° 00' N

50° 00' N

50° 00' N

50° 00' N

50° 00' N

50° 00' N

50° 00' N

50° 00' N

50° 00' N

50° 00' N

50° 00' N

50° 00' N

50° 00' N

50° 00' N

50° 00' N

50° 00' N

50° 00' N

50° 00' N

50° 00' N

50° 00' N

50° 00' N

50° 00' N

50° 00' N